



# NAoMe

National Audit of  
Metastatic Breast Cancer

NAoMe, Clinical Effectiveness Unit

Royal College of Surgeons of England  
38-43 Lincoln's Inn Fields  
London WC2A 3PE

E: [BreastCancerAudits@rcseng.ac.uk](mailto:BreastCancerAudits@rcseng.ac.uk)

T: 020 7869 6610

 [NAoMe\\_news](#)

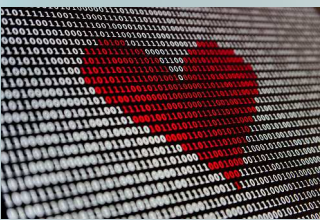
## NAoMe Newsletter, Autumn 2023

### Want to hear more?

The NAoMe is part of the National Cancer Audit Collaborating Centre (NATCAN). You can find out more about other NATCAN audits [here](#). If you would like to receive regular NATCAN updates, email:

[NATCAN@rcseng.ac.uk](mailto:NATCAN@rcseng.ac.uk)

### What patient data will the audit use?



The NAoMe, like all audits delivered by the NATCAN and like the National Audit of Breast Cancer in Older Patients (NABCOP) previously, will not directly 'collect' patient data. Instead, the audit will use sources of patient data routinely collected by national organisations. These include the National Disease Registration Service (NDRS) in England and the Wales Cancer Network (WCN).

As we will use the nationally mandated flows of data, from hospitals to the NDRS and WCN, there is

- no need for NHS organisations to register to participate in the NAoMe,
- no separate audit database or portal, and
- no audit-specific deadline for data submissions.

The NAoMe will publish a list of key data items this Autumn, which hospitals can check are being completed and submitted to the NDRS or WCN, as relevant.

### What progress has the NAoMe made?

Since our last Newsletter in July 2023, we have put together the NAoMe Scoping Report, which was delivered to the funder in September. This included

- results from the scoping survey carried out in Feb/March 2023,
- summary of key learnings from the NABCOP,
- review of NABCOP & external indicators, and
- review of relevant literature & clinical guidelines.

With feedback from the funder due at the end of October 2023, we will be publishing the NAoMe Scoping Report on the NATCAN website in November.



### Where is the NAoMe being talked about in the coming months?

We are looking forward to the audit being presented at various events this Autumn, including:

- MBC Wales Conference  
[23rd October]
- Greater Manchester Cancer Alliance Education Meeting  
[3rd November]
- UK Breast Cancer Group (UKBCG) 11th Annual Meeting  
[17-18th November]



Also, you can read about access to treatment, for patients with (metastatic) breast cancer, in a recently published peer-reviewed journal publication, based on work from the breast cancer audits team [here](#).

### When can hospitals see first results from the NAoMe?

From Spring 2024, we will start publishing audit dashboards, available to the public, on a quarterly basis. The first NAoMe "State of the Nation" Annual Report will then be published in Autumn 2024.



Breast cancer audit resources developed by the NABCOP (2016-2022) are still available [here](#) – these remain relevant in outlining important ways to check & improve your hospital's data completeness!

Follow us on X (formerly Twitter) :[@NAoMe\\_news](#)  
Email any breast cancer audit-specific questions to: [breastcancer audits@rcseng.ac.uk](mailto:breastcancer audits@rcseng.ac.uk)

FAQ